

	15,092	9,240	1,592	264		1,397	235	31.9
	16,150	8,439	1,639	272		1,436	342	32.0
	15,685	8,333	1,572	255		1,415	357	32.0
	14,010	7,379	1,531	605		1,343	846	30.6
	13,959	6,601	1,544	605		1,377	854	30.8
	12,603	6,457	1,530	749		1,363	957	30.4
	13,128	6,402	1,423	512		1,352	1,029	30.0
	13,250	6,482	1,522	685	1,314		1,029	29.3
	12,992	6,360	1,374	647	1,309		931	29.4
	11,817	6,192	1,459	745	1,308		925	29.3
	12,080	6,125	1,431	859	1,302		894	29.0

NOTE: Fall semesters include students enrolled for the first time in the fall or previous summer and again in the fall.

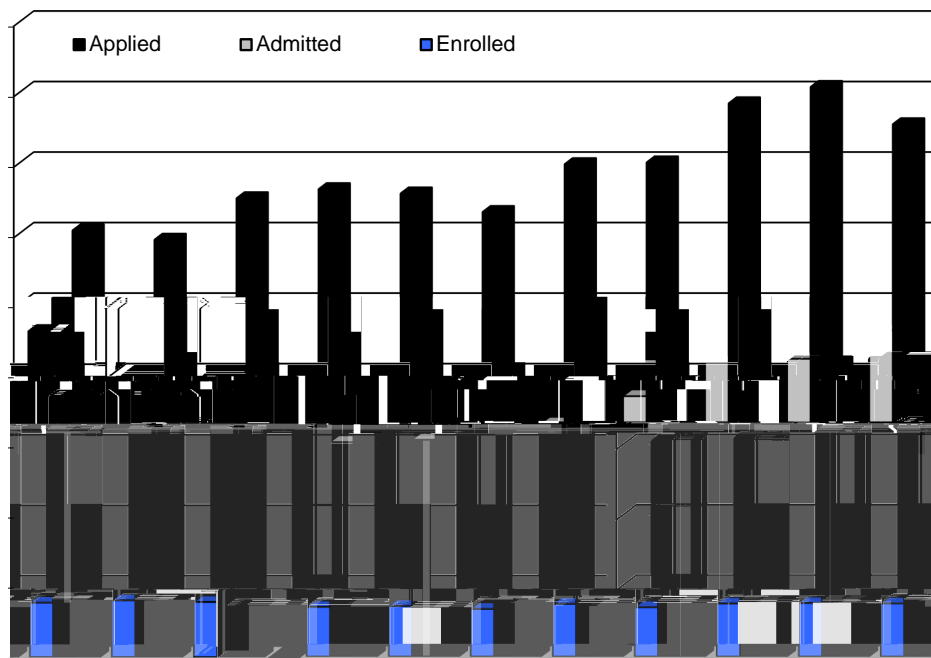
\* ACT Composite is calculated based on the best individual section scores (super score).

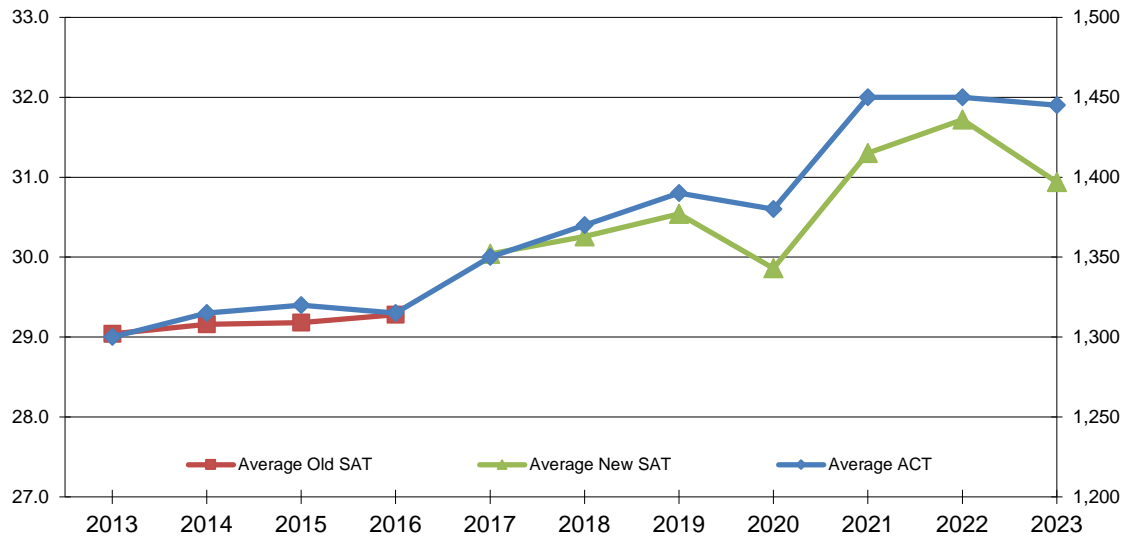
\* SAT and ACT scores reported are based on Single Score. (Higher of the two when both ACT and SAT are reported by a student)

\* Average ACT scores for 2015 and 2013 have been updated to adjust for rounding.

\* Beginning Fall 2017, New SAT = New SAT test takers and Old SAT test takers with scores converted to New SAT based upon the College Board Concordance. Old SAT scores, prior to Fall 2017 have not been changed/converted.

\* Beginning Fall 2019, based upon a revised admission policy methodology of counting applicants changed. ACT Composite is calculated based on the best individual section scores (super score).





Source: Application Data from Common Data Set 2013 - 2023; SAT and ACT scores from Admissions Office