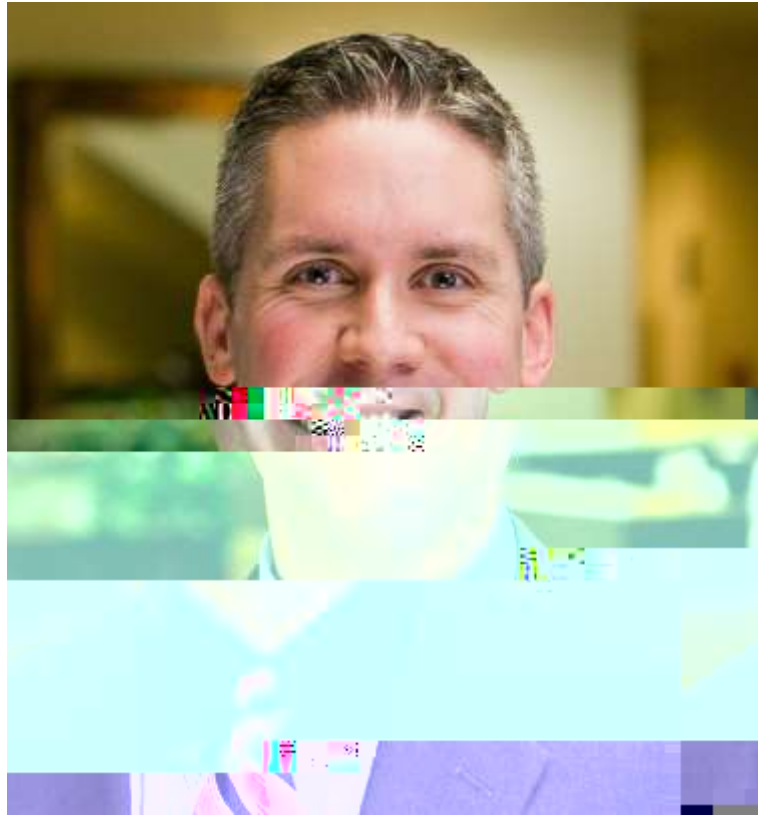




2020 Regulations

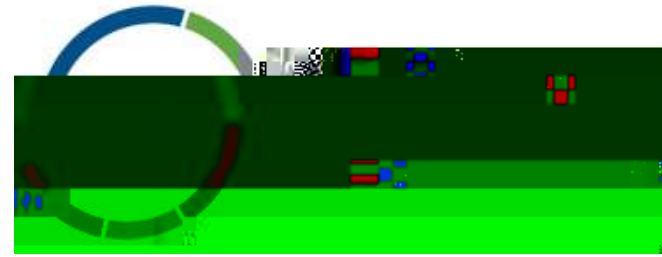


Back to Campus - Back to Title IX: Confronting the Challenges of the 2020 Regulations



H O S T

Visit us on the web at ELA.LAW



JOSH SALSBUREY

Member
Sturgill, Turner, Barker & Moloney



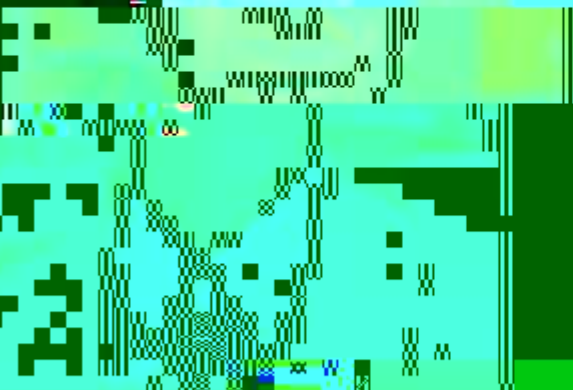
Global HR Legal Solutions

Employment Law Alliance is a comprehensive global network of local labor, employment and immigration attorneys that delivers timely, cost-effective legal solutions.

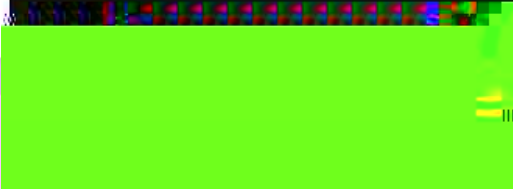




10:00 AM - 11:00 AM

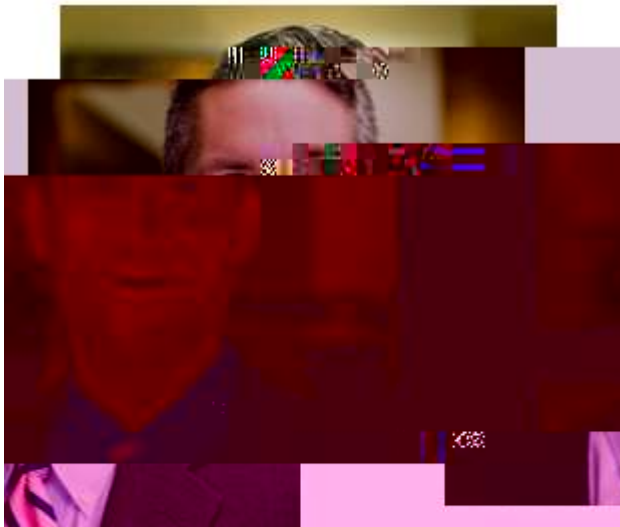


11:00 AM - 12:00 PM



ELA Austria





OST

Visit us on the web at ELA.LAW

Q&A

Welcome to Q&A

Questions you ask will show up here. The host and panelists will be able to see all questions.



Grid of video thumbnails showing various participants in a virtual meeting.

Navigation bar with icons for home, search, and other functions.



The ELA Presents



Event Resources

Presentation Slides & Certificate of Attendance

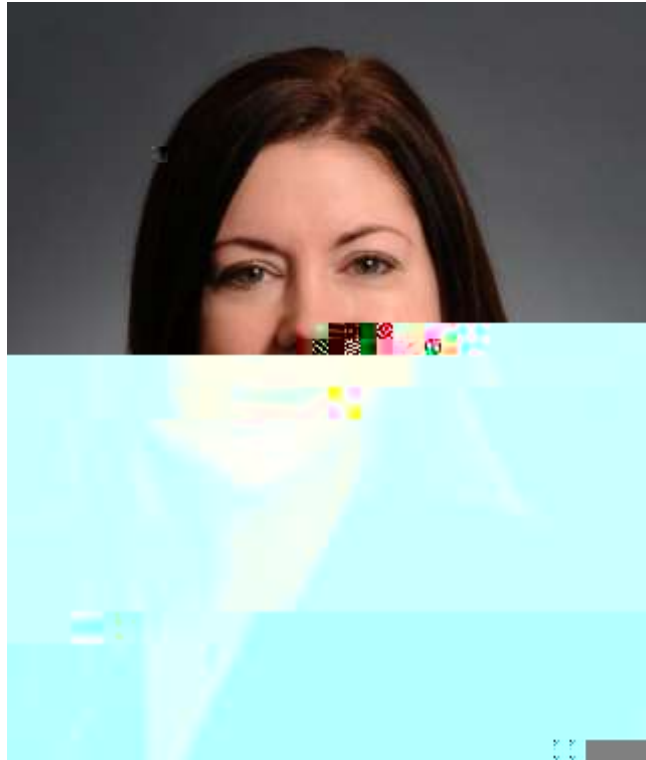
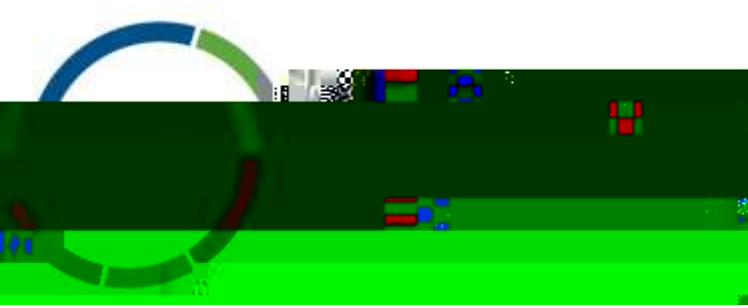


Resources provided by the speakers and their firms:



ELA Resources





MODERATOR

SUSAN DENIKER

Member

West Virginia



Overview

Back to Campus - Back to Title IX: Confronting the Challenges of the 2020 Regulations

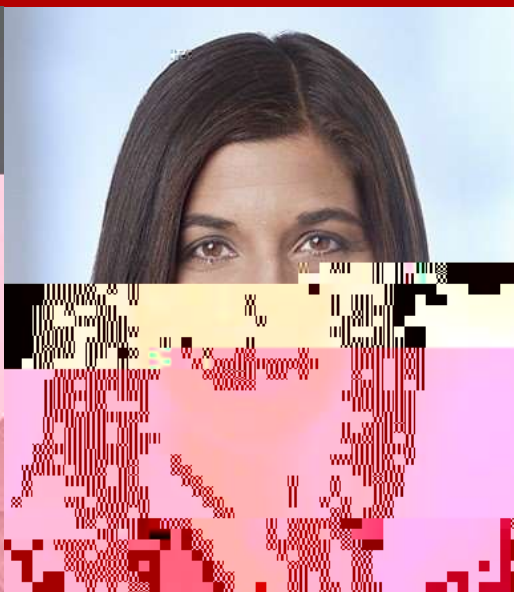


Panelists



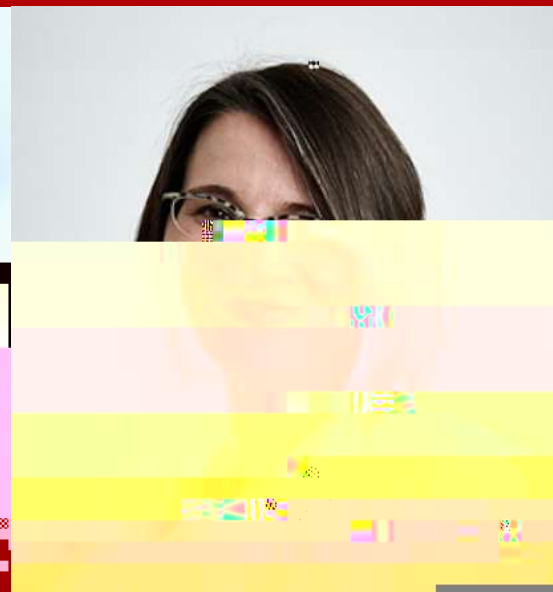
DEREK ISHIKAWA

California
dishikawa@hkemploymentlaw.com



KATHRYN M. NASH

Minnesota
kathryn.nash@lathropgpm.com

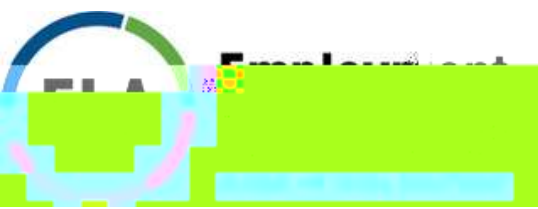


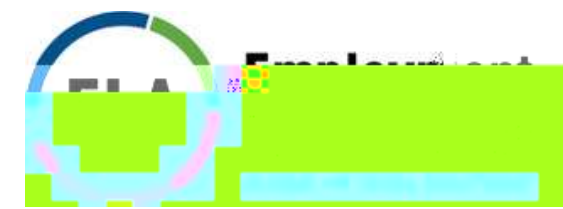
KATE NASH

Missouri - Eastern
knash@tuethkeeney.com



Derek Ishikawa
Attorney
Hirschfeld

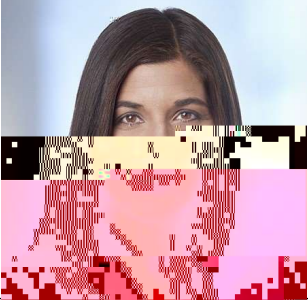




Amending Notice of Allegations



Access to Directly Related Evidence



Kathryn M. Nash
Partner
Lathrop GPM LLP
Minnesota

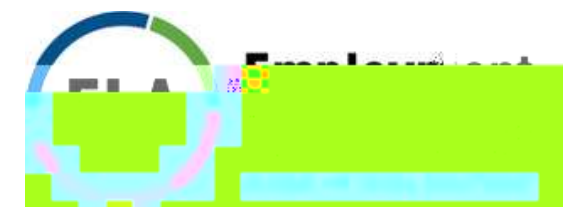


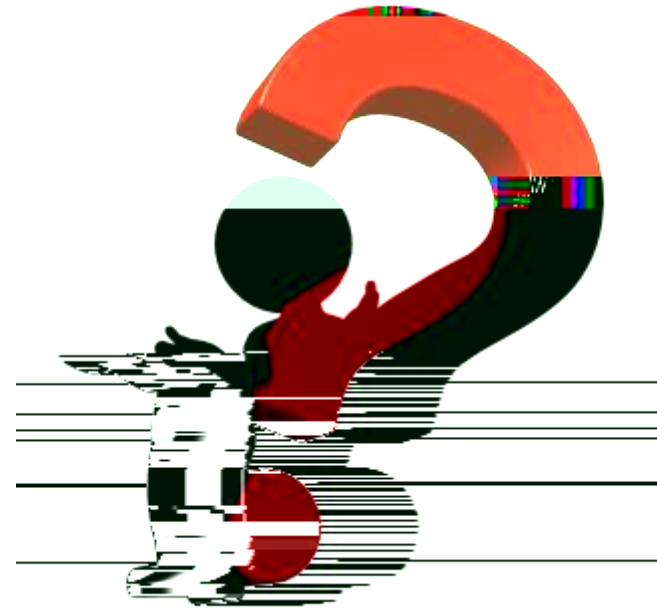
Changes Regarding "Statements" Not Subject to Cross-Examination



Kate Nash
Shareholder
Tueth Keeney Cooper Mohan &
Jackstadt, PC
Missouri - Eastern





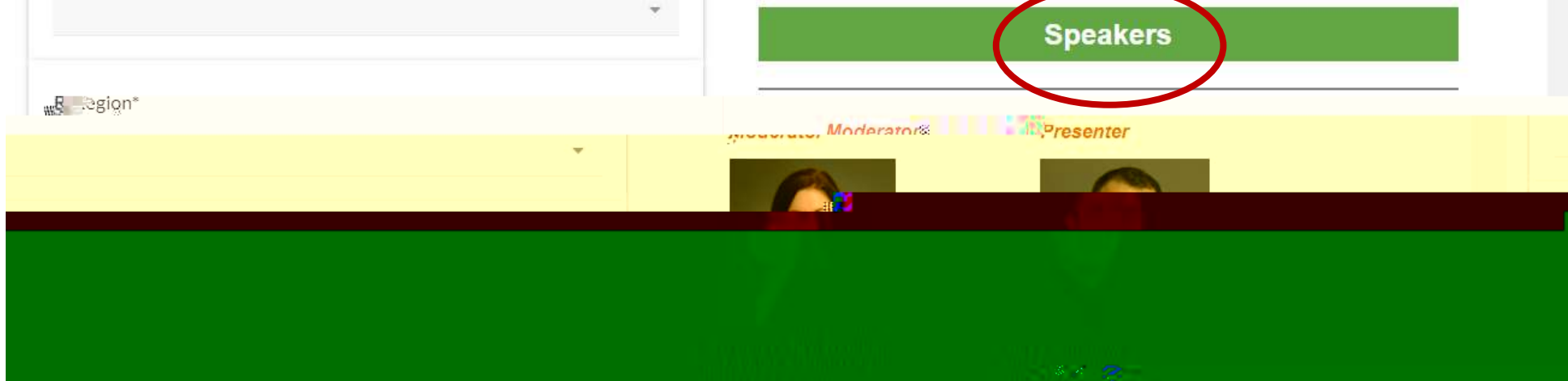




The ELA Presents



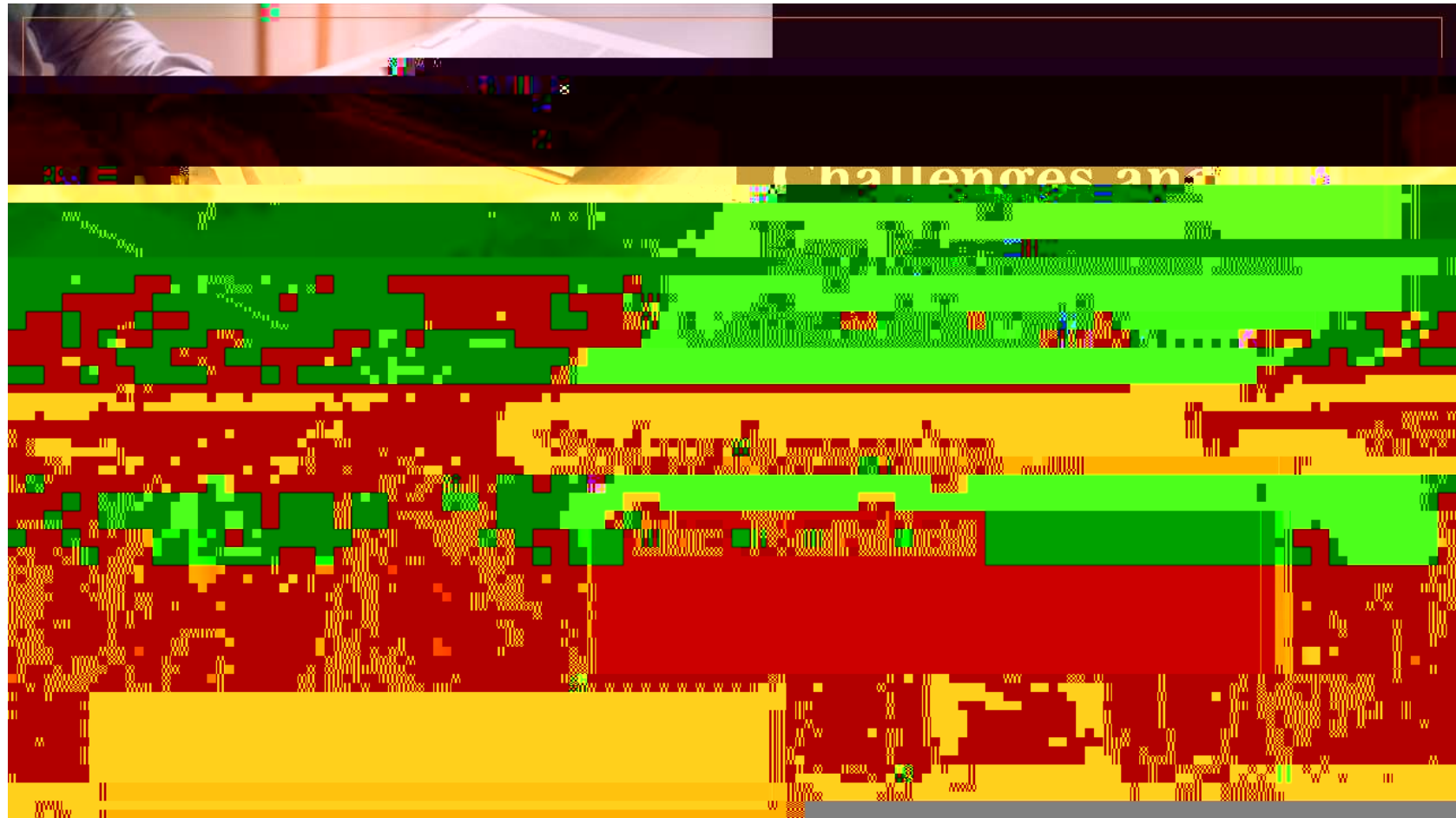
Speakers

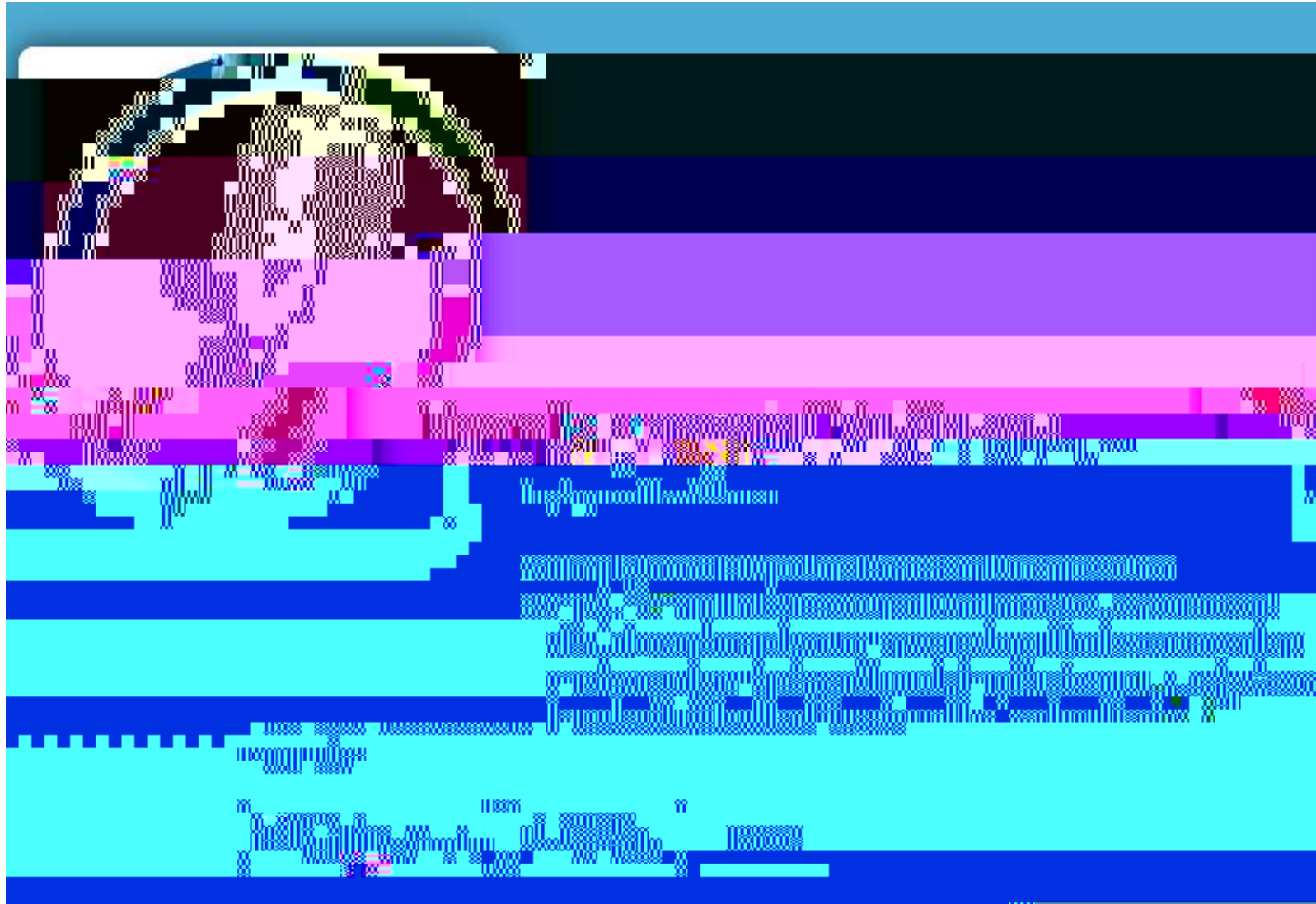


Coming Up Next!

[Register today!](#)

September 29, 2021





Listen to the
Employment
Matters
Podcast



Continuing Education Credit



The ELA Presents



Event Resources

Presentation Slides & Certificate of Attendance



Resources provided by the speakers and their firms:



ELA Resources

Continuing Education Credit



This program is valid for **1.25** PDCs

Course Number: **21-4QTGY**

Visit www.SHRMcertification.org to submit PDCs

A **Certificate of Attendance** and supporting materials are available for download in the resources tab and will also be included in your follow-up materials sent via email. Attendees seeking continuing education credit should submit these materials directly to the appropriate organization.

